



SILVER CHAIN

EVERY MINUTE. EVERY HOUR. EVERY DAY. WE CARE.

Targeting the Home Independence Program

Dr Gill Lewin
February 2008

who cares...

we care



EVERY MINUTE. EVERY HOUR. EVERY DAY. WE CARE.

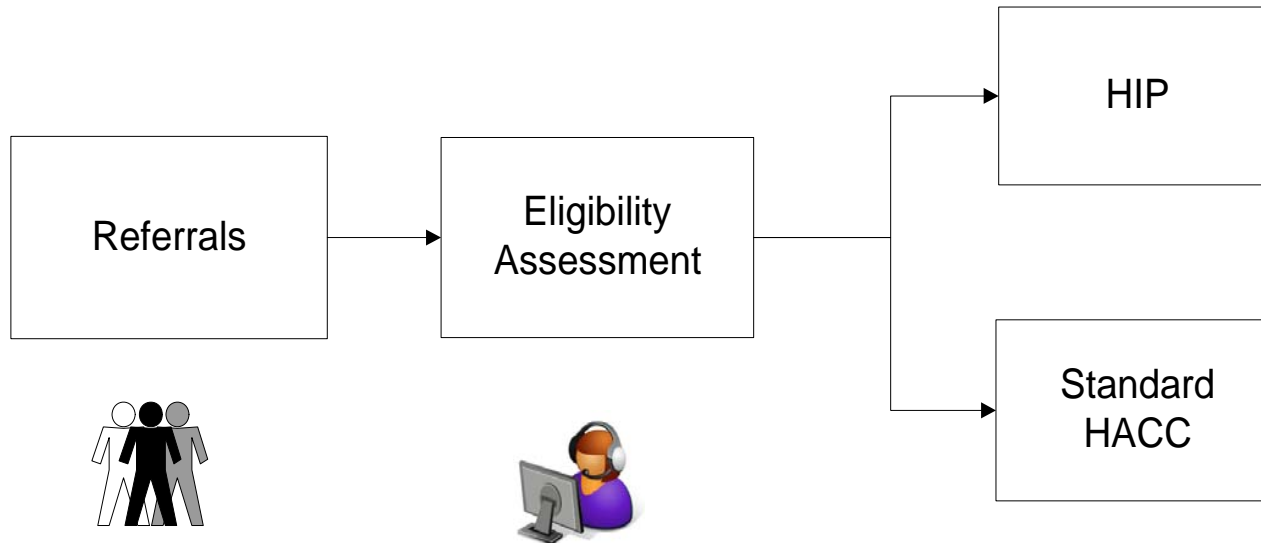
- Current situation
- Information considered
 - RCT results so far
 - Focus Groups with staff
- Conclusions
- Future targeting



Background



EVERY MINUTE. EVERY HOUR. EVERY DAY. WE CARE.



*Previously - Choice
Current - Randomised
Future - ??*

HIP RCT

Comparison of:

- “Inappropriate” vs Remainder
- Most “successful” vs Remainder
(Dependency + service outcomes)

Focus Groups

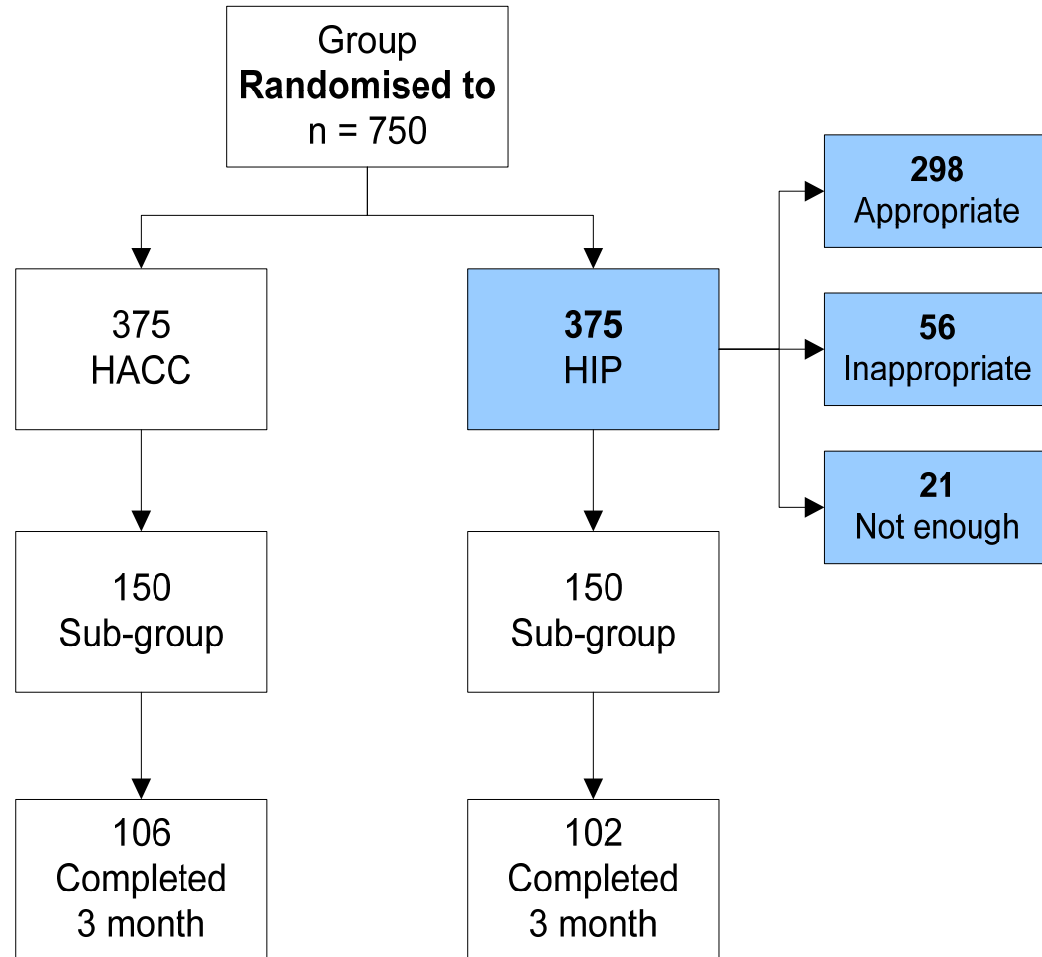
- Independence Teams



RCT Data - Inappropriate Analysis



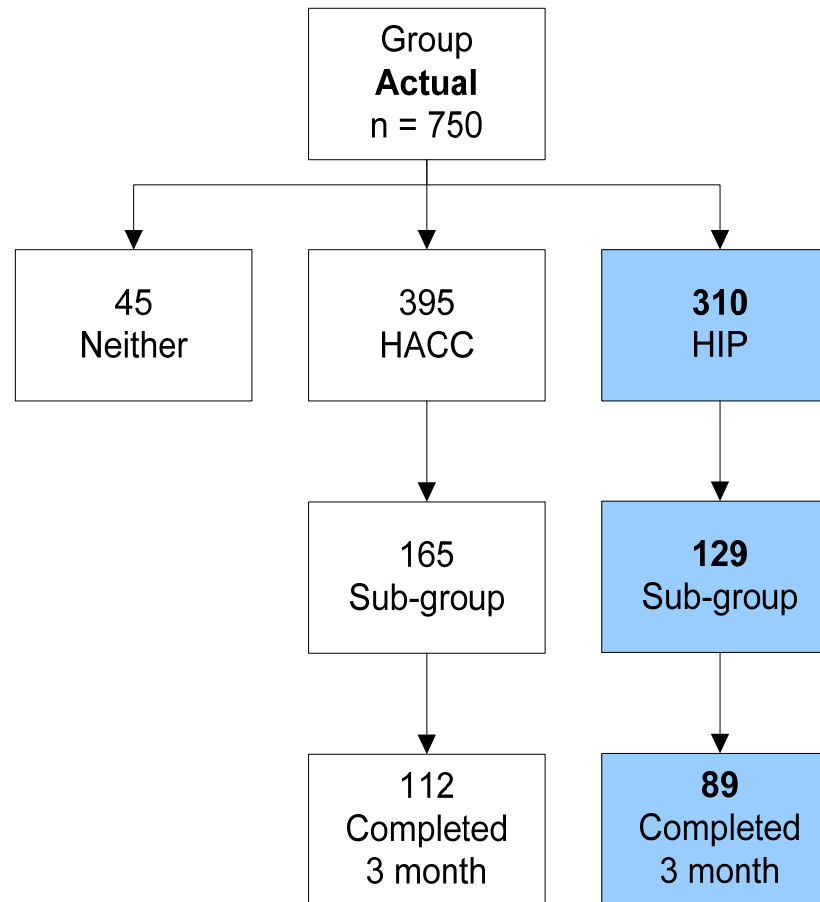
EVERY MINUTE. EVERY HOUR. EVERY DAY. WE CARE.



RCT Data - Dependency Outcomes



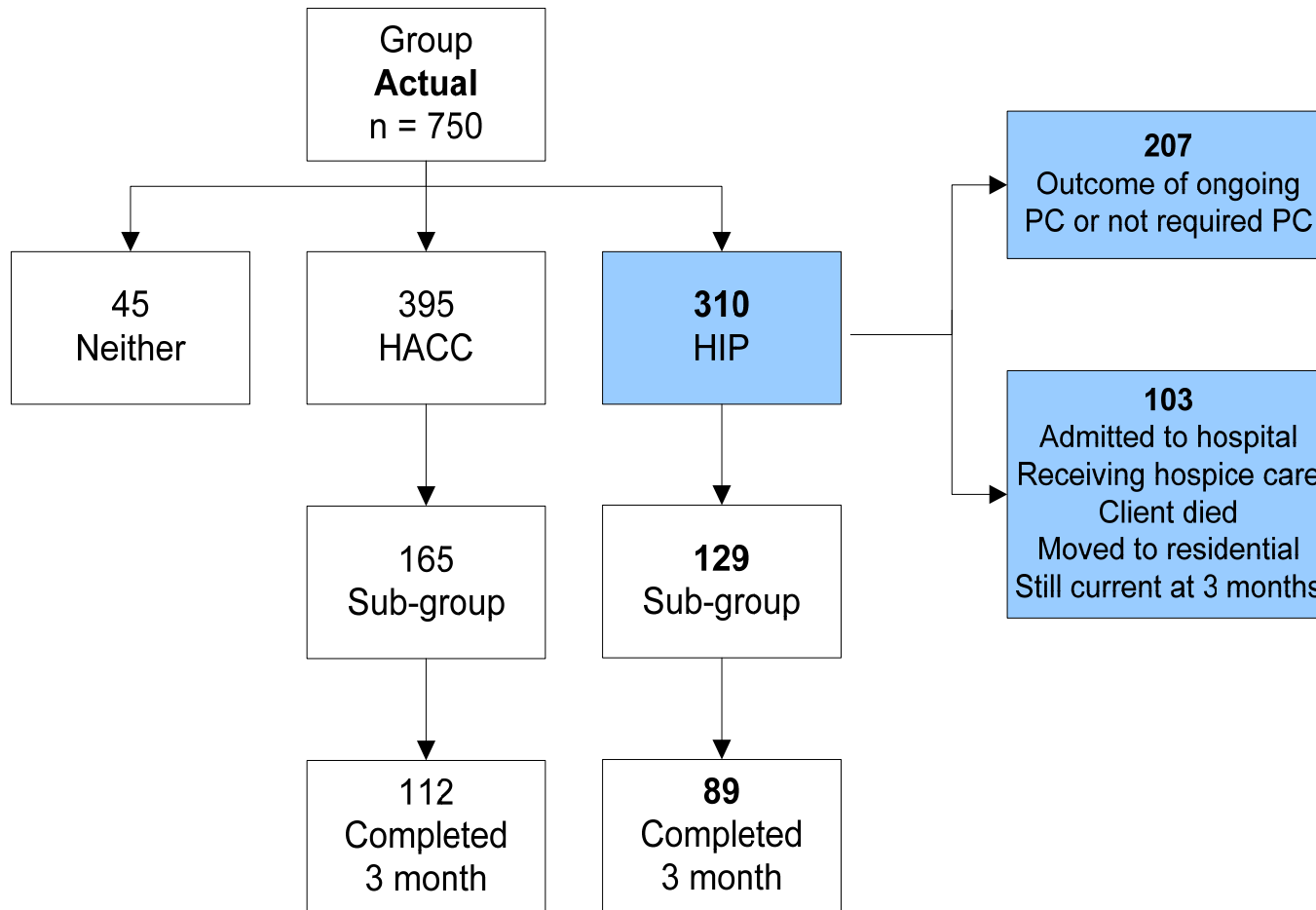
EVERY MINUTE. EVERY HOUR. EVERY DAY. WE CARE.



RCT Data - Service Outcomes



EVERY MINUTE. EVERY HOUR. EVERY DAY. WE CARE.



Focus Group Questions



EVERY MINUTE. EVERY HOUR. EVERY DAY. WE CARE.

- What is the main purpose of HIP?
- Who does HIP work well for?
- Who does HIP not work well for?
- Have staff found that HIP works with anyone that they did not expect it to? If yes, who?
- How do staff measure capacity to improve?
- What are the reasons clients are judged inappropriate?
- Clients have been described as not receptive to an independence approach, how is this judged?
- What questions could be used up front to identify who HIP is appropriate for?





HIP effective for many, including individuals:

- Living with dementia and neuro-degenerative conditions in early stages
- Living with chronic diseases
- Referred by ACATs for packages

Particularly effective for:

- Post acute
- Motivated people receptive to an independence approach
- Individuals without expectations of ongoing care

Not effective when:

- Individual has extended care history
- Individual/family has strong expectations regarding care/ageing
- Client is terminally ill



“Capacity to improve”/ “appropriateness”:

- Not defined by MDS or HNI characteristics
- Can not be judged over the phone
- Is multi-variate

Other Issues:

- Definition of program “success” needs to be broadened
- 60% of eligibility assessments not conducted with client
- Expectations of home care often predetermined by referrer

Conclusions



EVERY MINUTE. EVERY HOUR. EVERY DAY. WE CARE.

- No easy answers
- Intervene early
- Limited role for telephone screening
- Need face to face assessment
- Enablers include:
 - Service availability
 - Community, GP, family expectations

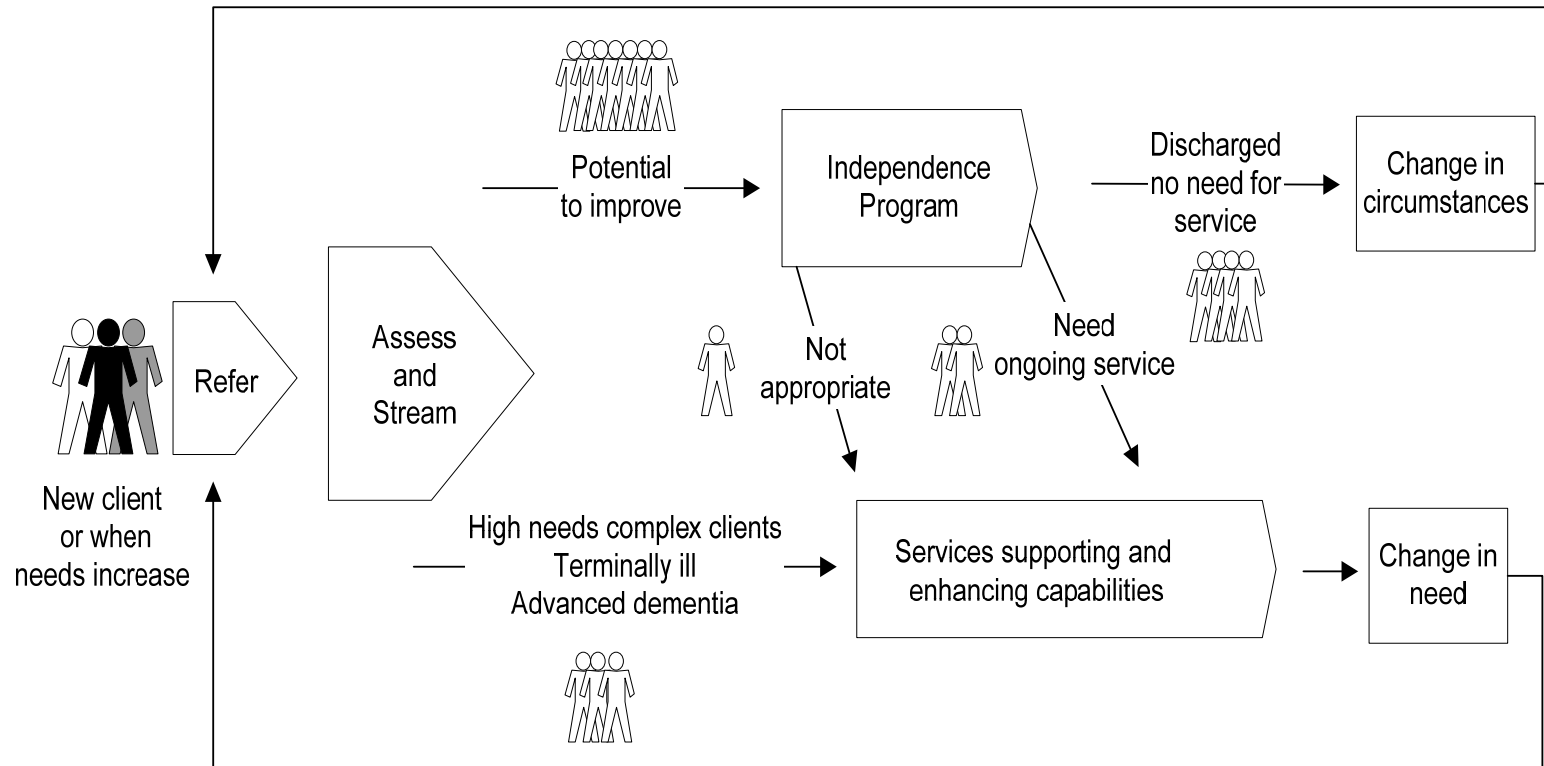


Future Targeting



EVERY MINUTE. EVERY HOUR. EVERY DAY. WE CARE.

Increase HIP capacity, Retain broad eligibility, Intervene earlier





Data Collection and collation:

Kristen De San Miguel

Attending Focus Groups:

Independence Care Managers

THANK YOU

glewin@silverchain.org.au, G.Lewin@curtin.edu.au