

Research in Silver Chain

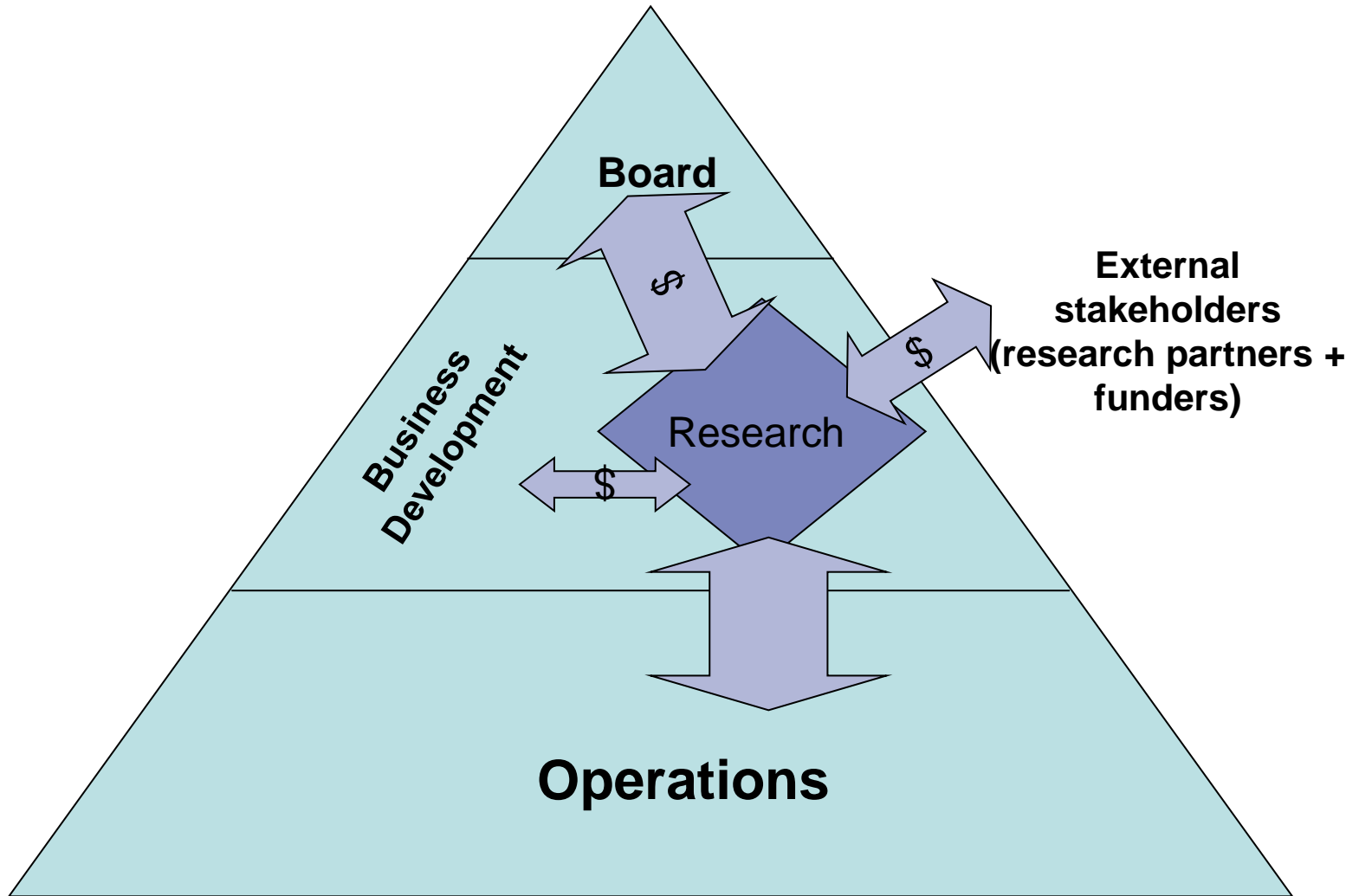


ISO 9001 QEC13228
Standards Australia

Research Strategic Objectives

- Develop research to ensure the relevance, quality, effectiveness and efficiency of services provided by Silver Chain
- Define the needs of the community to enable Silver Chain and other care providers to better meet these needs
- Build collaborative partnerships to promote the development of quality research aimed at improving health and aged care
- Promote research that will improve the services of Silver Chain and other health and aged care providers

Accountabilities and Relationships



Types of Research Undertaken

- Evaluations (Services, Interventions, Programs)
- Development and Testing of New Service Models
- Needs Analyses
- Business Analysis
- Clinical Research
- Development and measurement of key performance indicators eg. client and staff satisfaction, clinical quality indicators.

Examples of Our Research

An Evaluation + the Development of an Indicator of Care Quality:

Evaluation and ongoing monitoring of the effectiveness of implementing the Australian Wound Management Association “Guidelines for the Prediction and Prevention of Pressure Ulcers” across the organisation.

Project Rationale

- Many Silver Chain home care clients have limited mobility
- Poor mobility increases the risk of pressure ulcers
- There was no standardised pressure ulcer risk management across Silver Chain
- Anecdotal data that number of clients with pressure ulcers was increasing
- Existing evidence that prevention of pressure ulcers can be achieved by implementing appropriate guidelines

Project Design

Stage 1 : Baseline Prevalence Survey

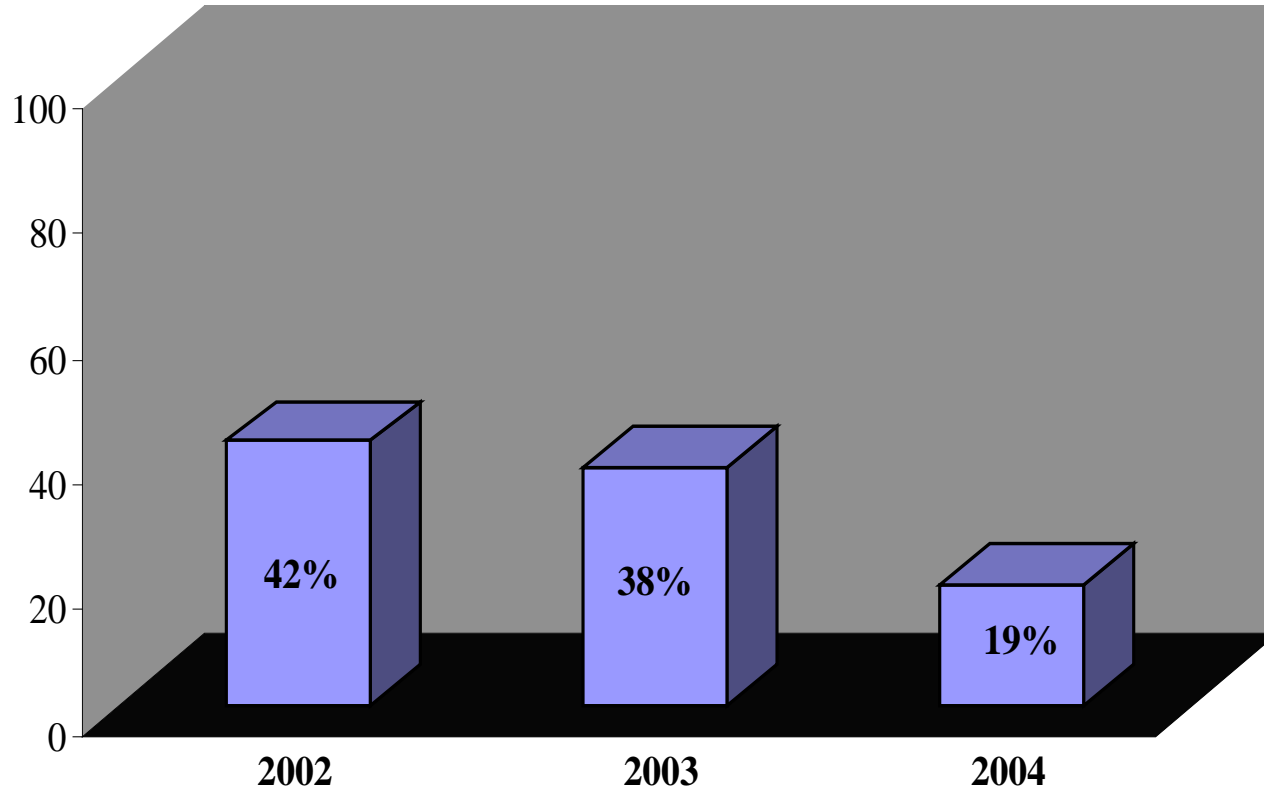
Stage 2 : Guideline Implementation

i.e. development + implementation of processes
for risk assessment and management

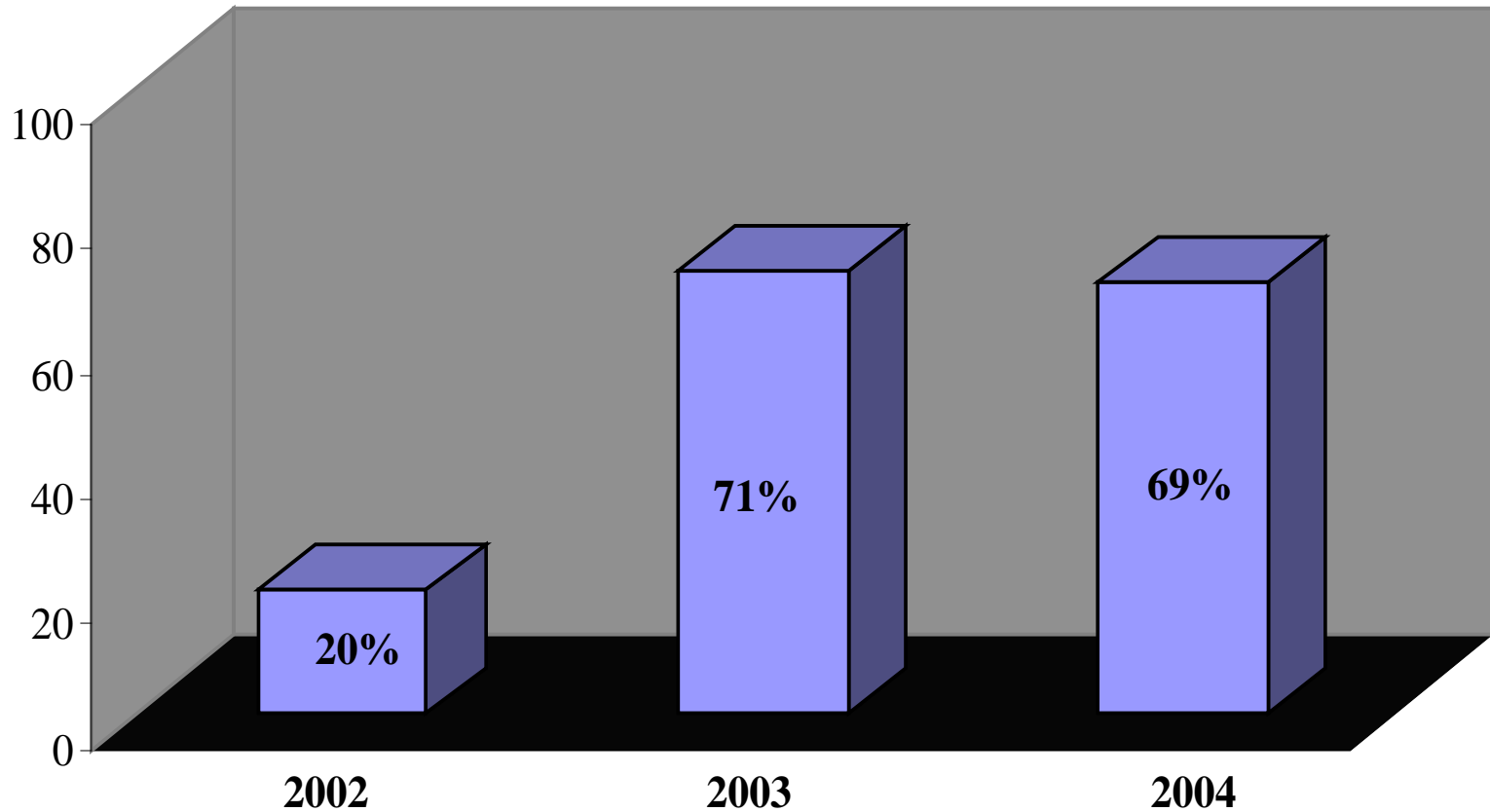
Stage 3 : Follow-up Prevalence Survey

Stage 4 : Continual monitoring of risk assessment,
pressure ulcer prevalence and incidence as
indicators of quality care

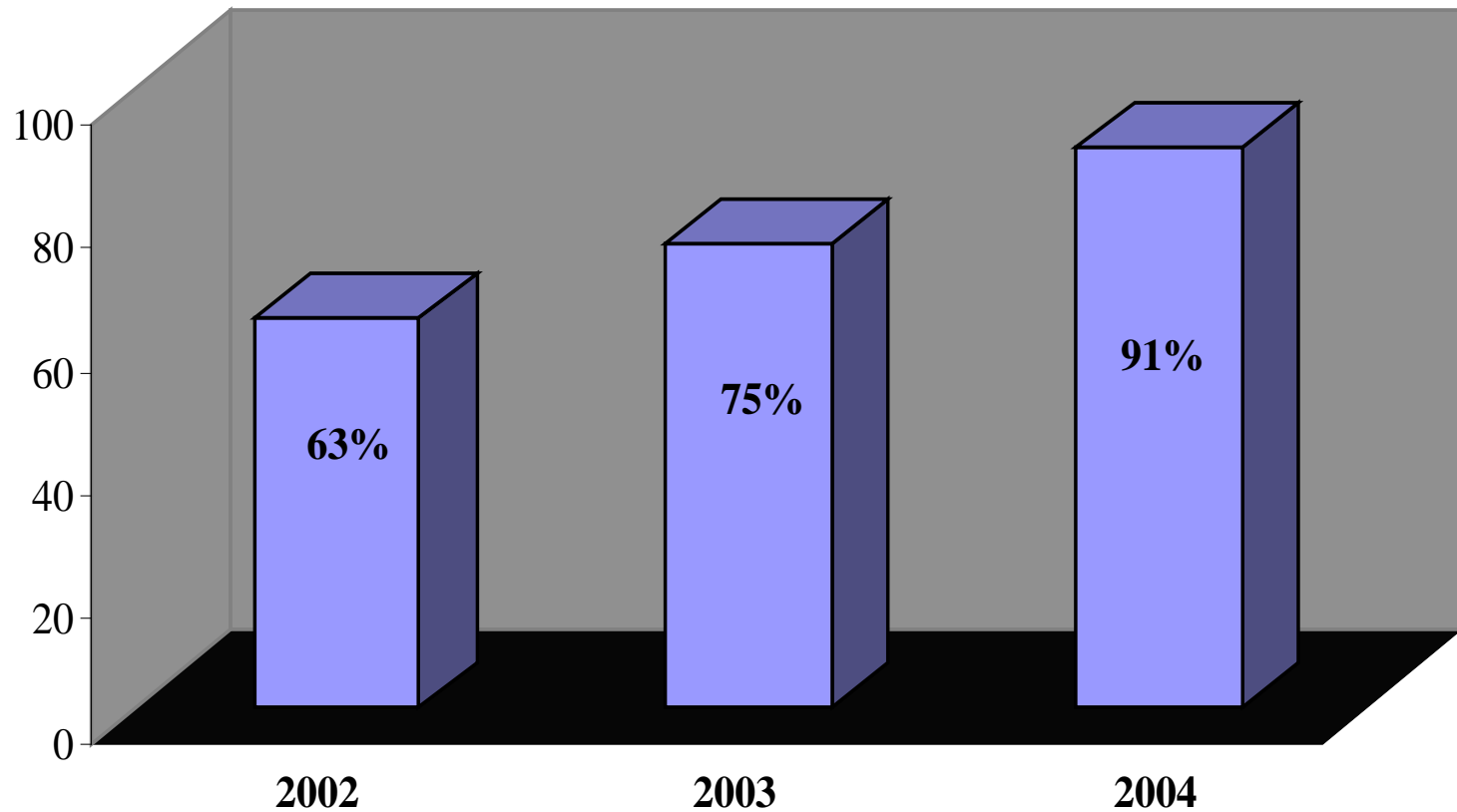
Pressure Ulcer Prevalence



Percentage of clients with current risk assessment



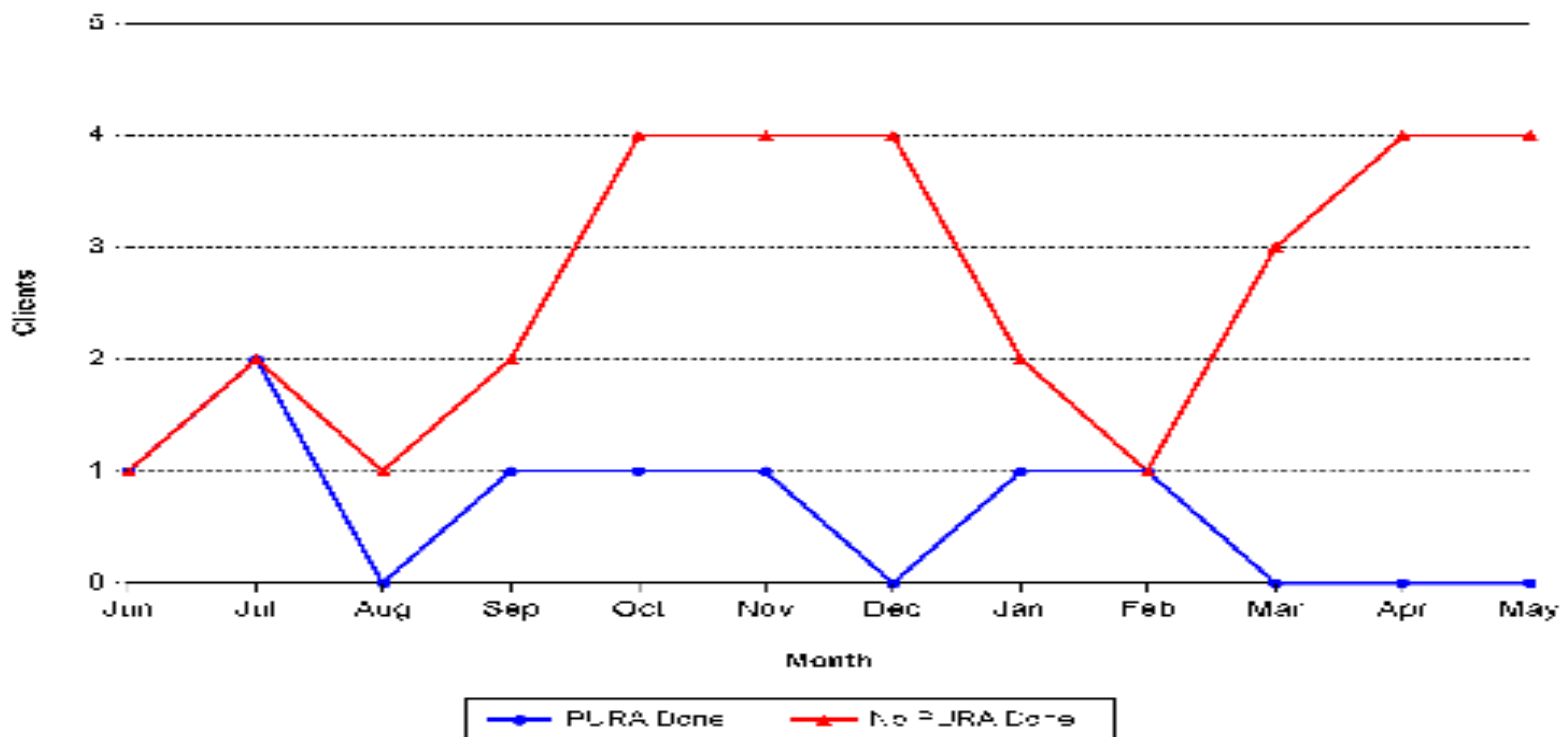
Percentage of clients with appropriate equipment



Example report to Managers

SILVER CHAIN	CLINICAL CLIENTS ASSESSED AT RISK and PURAs	
Printed Tuesday, June 20, 2006 12:42 PM	Page 1 of 2	PURA_Clinical_HI
Date Up to : Wednesday, May 31, 2006	This report shows Clinical clients assessed as At Risk of Pressure Ulcers and whether a PURA was conducted within 7 days.	

Clinical Clients Assessed At Risk and PURAs performed within 7 Days for the Last 12 Months



Development And Testing Of A New Model Of Care:

The Social Rehabilitation Trial



Project Rationale

- Two studies in Silver Chain found 62% and 42% home care clients screened positively for depression (using different tools)
- Depression shown to be related to higher use of services
- In study of 4000+ clients we found significant relationships between loneliness, social isolation, unmet social and emotional needs and screening positively for depression.
- Age Concern UK developed and trialled a Social Rehabilitation Program

A process which enables individuals to regain their independence, in part or in full, giving them back as far as possible control over their own lives and helps them to resume social roles which are important to them

Objectives of Social Rehabilitation Trial

- 1 To develop and implement a social rehabilitation program in a defined geographical area in the metropolitan area.
- 2 To conduct a formative evaluation of this process in order to determine how viable running this sort of program is for Silver Chain and to inform possible future development or expansion of the service.
- 3 To measure the effectiveness of the program in terms of a range of client outcomes including: well being, social isolation, loneliness, depression and use of home care and other services.
- 4 To measure the effectiveness of the program as judged by clients, staff, volunteers and other stakeholders (eg. referees and families).
- 5 To use the data collected in 2-4 as the basis for recommending the future of social rehabilitation in Silver Chain.

Social Rehabilitation Trial Plan

Tasks	Timeframe
Project Set Up Establish Project Steering Committee + responsibilities Appoint Project Officer/Program Co-ordinator Define trial region + set up appro. office accommodation	1 month
Develop Program + evaluation Develop care model and work processes Develop evaluation plan Identify or develop outcome tools/measures Develop and implement evaluation data collection processes Recruit + train Volunteers	3 months
Implement Program Trial program with 40-50 individuals Ongoing monitoring and data collection	6 months
Evaluate Program and Make Recommendations Analyse data Collate findings Write report and recommendations	2 months

A Needs Analysis:

Osteoporosis Risk Assessment in Home Care



Project Rationale

- Home care clients are at high risk of falling (46% fallen in last 12 months)
- Older people who fall and who have osteoporosis are more likely to fracture.
- Fractures in older people are associated with poor outcomes (loss of independence and increased service use).
- Are home care clients at risk of osteoporosis being identified, assessed, and if diagnosed, treated?

Research Objectives

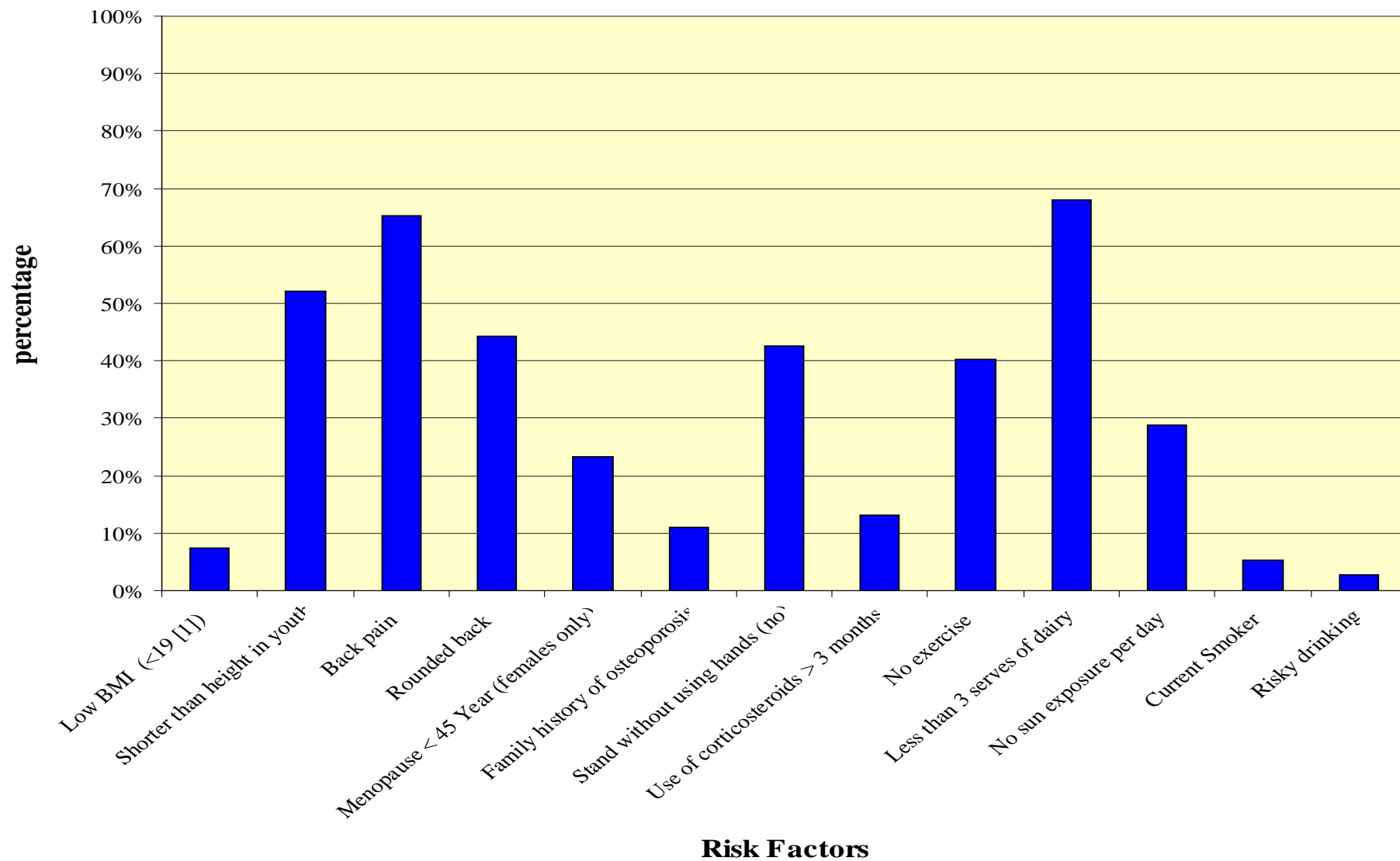
- Describe the osteoporosis risk profile of Silver Chain's older clients
- Determine the prevalence of recent fracture amongst Silver Chain's older clients
- Understand the care pathway experienced by those clients who fractured and compare it to osteoporosis guidelines

Methods

- Mail survey of 1500 randomly selected clients aged 65+
- Interviews with 100 clients who had fractured
- Audit of GP notes of 25 of these clients

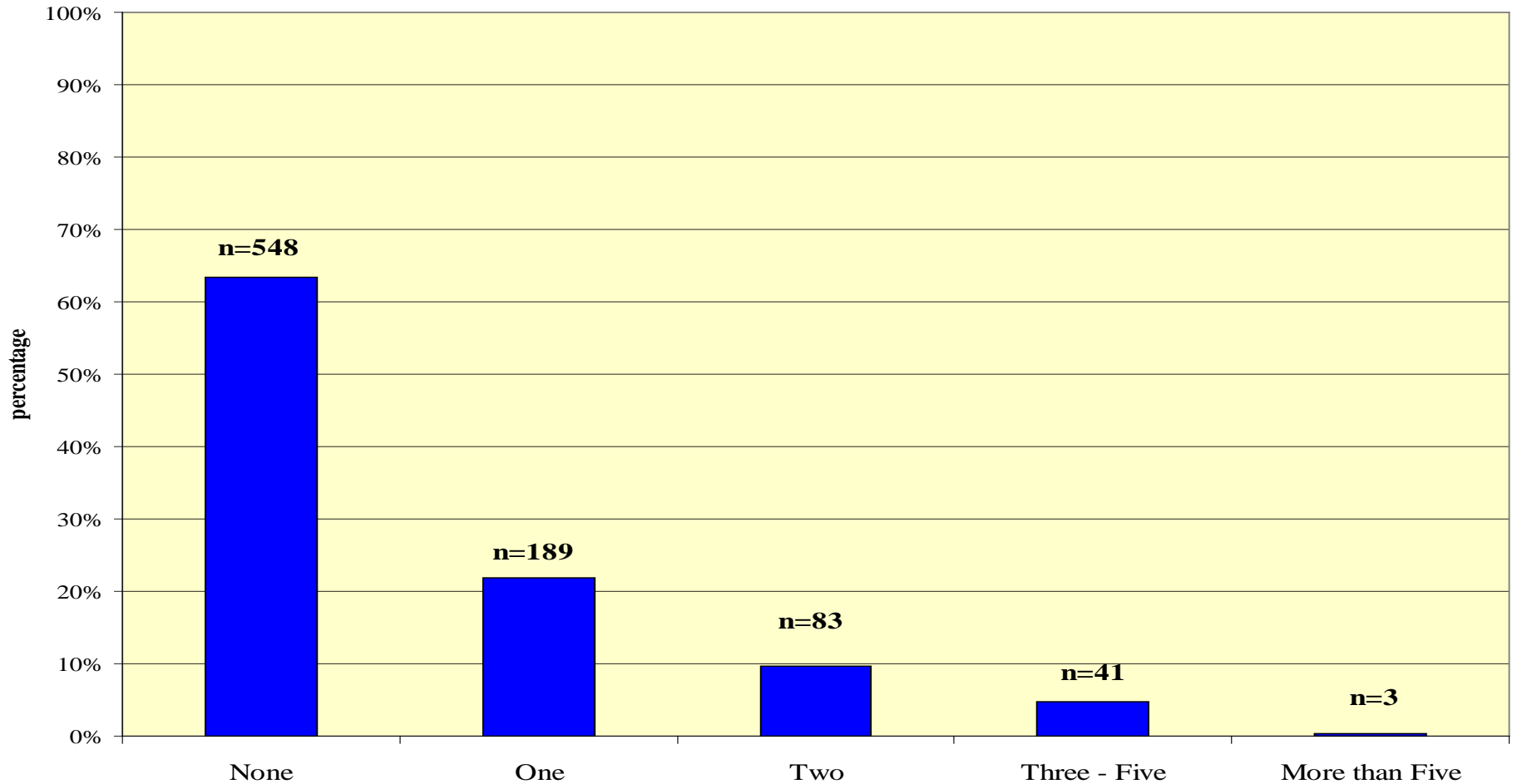


Risk Factors



Fractures since aged 50 yrs

Number of Fracture Episodes



Post-fracture Assessment + Treatment

- 51.7% had a Bone Mineral Density Test
- 54.6% were recommended something to reduce the risk of fracture in the future
- Only 9.4% were on treatment outlined by protocol for treatment of minimal trauma fractures (calcium, vitamin D and osteoporosis medication)

Further work in this area

- Identification of single item screener for who needs more detailed risk assessment
- Development of guidelines, in collaboration with key external stakeholders eg. GPs + osteo specialists, for response to each level of risk (ie. referral and/or service response)
- Evaluation of effectiveness of guidelines in increasing identification and appropriate management of individuals with osteoporosis, using pre/post test research design

Business Analysis:

CareLink

CARELINK

What is it?

- Personal alarm service
- Enables the person to gain assistance in an emergency
- Pendant generally worn around the neck
- Connects to 24 hour monitoring centre

Why a study on personal alarms?

- Relatively little research
- Understand who uses the service & why
- Examine service outcomes

OBJECTIVES

- Identify the key factors that influence the decision of the older person and their families to purchase or not to purchase a personal alarm service
- Investigate clients' expectations and the outcomes sought when purchasing the alarm
- Determine if the alarm is used as designed
- Investigate if clients' expectations have been met and expected outcomes achieved



Methods

Qualitative Study

- 22 face to face, in-depth interviews with current CareLink users
- 11 telephone interviews with relatives identified by clients
- 10 telephone interviews with non-users of the CareLink service

Quantitative Study

- Mail out survey to 2,630 current CareLink clients
- Mail out survey to 466 relatives/friends identified by clients



Key Findings

Decision to Use

- 75% had assistance from relatives/friends
- 35% were not involved at all
- Fear of falling (75%), family pressure (74%), having an on-going medical condition (73%) and living alone (72%).

Wearing the Alarm

- 85% wore around their home and outside in the garden
- 46% never wore in shower, 30% never wore to bed at night



Key Findings

Use in Emergencies

- 32% had used the alarm (55% Falls)
- 18.5 had hesitated to press the alarm

Expectations/Outcomes Achieved

- Get help quickly in an emergency (88%), feeling of security for themselves (83%), continue living in their own home (74%) feeling of security for their family (73%)
- Reduced anxiety about fear of falling, increased confidence in performing everyday activities, increased time able to remain living at home, reduced contact with family

A Clinical Research Project:

“A search for the Silver Lining”

**A randomised controlled trial of two anti-microbials
in the treatment of chronic leg ulcers.**

Project Rationale

- Leg ulcers affect 1- 3 per thousand adults
- Annual cost of treating leg ulcers is estimated at A\$3 billion
- Healing rates may be as low as 22% and occurrence rate as high as 69%
- Anti-microbials most common primary dressing used
- No research on differential effectiveness of two most common treatments
- 47% of wounds treated by Silver Chain are leg ulcers



Aim and Objectives

To develop an evidence-based protocol for the management of critically colonised and infected leg ulcers by:

Comparing cadexomer iodine and silver impregnated dressings in regard to:

- Control of wound colonisation and infection
- Wound healing
- Costs
- Acceptability
- Ease of use

Research Design

- **RCT at Silver Chain and RDNS Melbourne**
 - **180 clients in each service**
 - **Eligible if:**
 - **Have leg ulcer < 15cms that colonised or infected or if no healing evident for 2+ weeks**
 - **Not diabetic**
 - **ABI 0.6+**
 - **Measures:**
 - **Wound swabs**
 - **Healing rates**